

Helping you make the right Gutter Mesh decision

ISSUE 2

Blue Mountain Co
GUTTER MESH

Contents

Three simple steps	1
01 Assess your needs	2
Leaves & leaf size	4
Bushfire & ember guarding	6
Understanding bushfire compliance	8
Pests & vermin	10
Hail & snow	12
Strength & durability	14
Rust & corrosion	16
02 Match your ideal mesh	18
Our Range	20
Which gutter mesh is right for you	22
Mesh Matcher™	24
03 The perfect installation	26
Kits and componentry	28
Mesh Lock Gutter Trim	30
Corrugated Valley Multi-Pitch Fin	32
Domed Steel Valley Mesh	34
Solutions for almost any roof	36
Comprehensive colour range	38
Custom Solutions and expert advice	40
Gutter Mesh Design Service™	42
Helping you select the right gutter mesh	44

Three simple steps to match the right gutter mesh for your home

By selecting the gutter mesh best suited to your property and location, you'll enjoy greater peace of mind and years of hassle-free gutters.

01 Assess your needs
Understanding your needs will help you to select the best gutter mesh for you. To do this, consider factors such as leaf size, pests, bushfire risk, strength, and hail and snow activity.

02 Match your ideal mesh
Risks and needs vary from property to property and place to place, so we've developed an extensive range of gutter mesh products to provide a mesh solution that's suitable for your home. To make the process as easy as possible, we have created a simple online tool, Mesh Matcher™ [meshmatcher.com.au](https://www.meshmatcher.com.au)

03 The perfect installation
With all-inclusive kits and specially tailored componentry, our gutter mesh is easy to install. Not only does it protect your property – it also looks great doing it.

Get expert assistance and advice with our free Gutter Mesh Design Service™ visit www.bluemountainmesh.com.au or call us on (07) 3248 9600.

01

Assess your needs

Understanding your needs will help you to select the right gutter mesh for you. To do this, consider factors such as leaf size, pests, bushfire risk, strength, and hail and snow activity.



Leaves & leaf size

Leaves that fall into your gutters come in many shapes and sizes. Vegetation that glides off a well-chosen mesh may pass through or get stuck in less suitable options, so it's important to consider the size of the leaves in your area.



Hail & snow

Accumulated hail or snow can damage your gutters and threaten the integrity of poorly-specified mesh. Hail can also puncture some meshes.



Bushfire & ember guarding

Poorly-specified gutter mesh may put your property at risk from bushfire by letting leaves into your gutters or letting embers through the gaps between your guttering and roof.



Strength & durability

Gutter mesh strength varies from product to product, so it's important to consider your strength needs and determine how important strength and durability are to you.



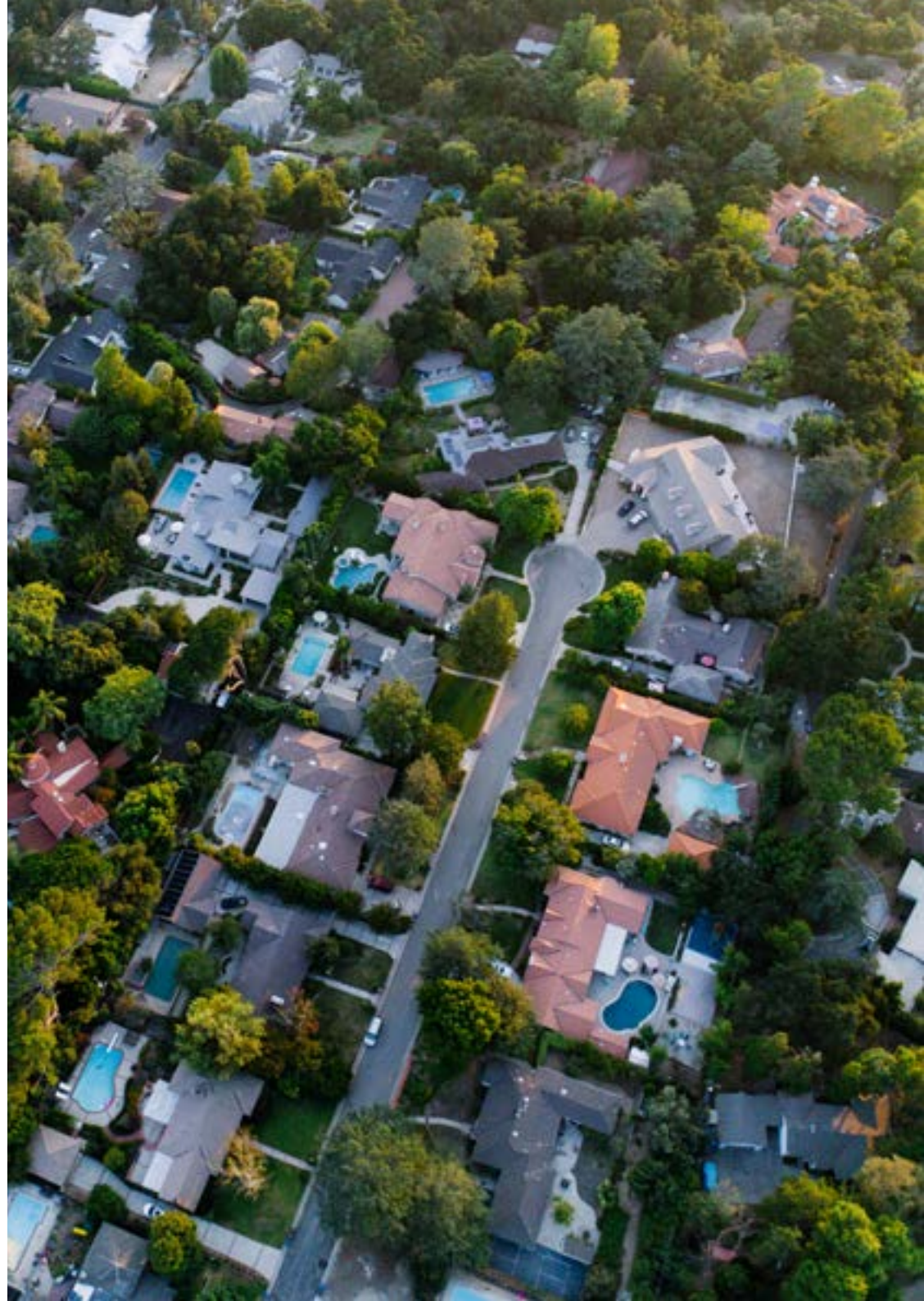
Pests & vermin

When animals get into your roof and gutters, they can pose all sorts of threats to your building. Sturdy gutter mesh will keep these pests and vermin out.

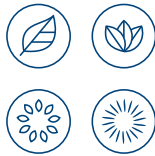


Rust & corrosion

Avoid mixing "dissimilar" metals, minimise time of wetness and ensure that you use fit-for-purpose, specially coated steel to manage the risk of corrosion for your roof, gutters or mesh.



Leaves & leaf size



Not all mesh will keep out all plant matter. That's because different species of trees produce different-sized leaves, flowers, berries and filaments. Similarly, gutter mesh comes in different apertures (hole sizes). To match the right mesh, we encourage you to classify the smallest-sized leaves and vegetation in your gutters and around your home into one of the categories shown to the right: *large leaves*, *medium leaves*, *small leaves* or *needles*.

Prevent flooding

Clogged gutters and downpipes can cost you thousands in the event of heavy rain or storms, as water overflows into your eaves and ceiling cavities, onto your verandas and terraces or into your downstairs rooms. In fact, water entering homes from blocked gutters is a leading reason for insurance claims.

Reduce cleaning costs and safety risks

Gutter cleaning is a dirty and dangerous job. The cost of professional cleaning can quickly add up, while the risk of serious injury or even death from DIY gutter cleaning is uncomfortably high. By installing the right gutter mesh, you can significantly reduce these risks and expenses.

Improve your rainwater quality

If you have a rainwater tank, keeping plant matter out of your gutters is a big step towards the ultimate goal of having cleaner rainwater and lots of it. Without mesh, leaves can contaminate your rainwater supply or reduce the volume of water flowing into your tank.

Steel and aluminium gutter mesh are both effective at keeping out plant matter as long as the appropriate aperture has been selected.



Large leaves

Palm fronds, bamboo, etc.

Recommended: 2mm, 4mm or 5.4mm aperture mesh



Medium leaves

Silky oak, gum leaves, gum nuts, etc.

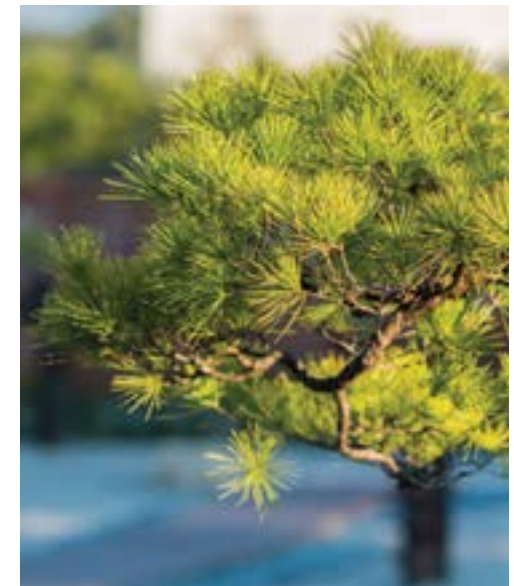
Recommended: 2mm or 4mm aperture mesh



Small leaves

Wattle, jacaranda, poinciana, etc.

Recommended: 2mm aperture mesh



Needles

Pine needles or similar.

Recommended: 2mm aperture mesh; however, some needles may still go through

Bushfire & ember guarding



The vast majority of homes destroyed during bushfires are victims of ember attack, meaning they ignite and burn due to contact with windborne embers (burning debris) rather than direct flame contact.¹

Your gutters are a prime source of such ember attacks. They make you vulnerable to ember attack in two significant ways.

1. Inside your gutters

Dry leaves in gutters are a source of fuel that can be ignited by bushfire embers. Unprotected gutters are the main reason for this problem; however, poorly-specified gutter mesh can also leave you vulnerable to this threat by allowing leaves to enter your gutters.

2. Inside your building

Embers can get inside your building through small gaps between your roof, gutters and fascia. They can then start a fire when they land on insulation or other fuel sources. Only a gutter mesh made from materials approved to the Australian standard AS3959-2009 such as corrosion-resistant steel, and with an aperture of 2mm or smaller, will keep embers out of your gutters.



¹ Country Fire Authority - Victoria, www.cfa.vic.gov.au/plan-prepare/how-fire-behaves

Get expert assistance and advice with our free Gutter Mesh Design Service™ visit www.bluemountainmesh.com.au or call us on (07) 3248 9600

Understanding bushfire compliance



AS3959-2009

Australian Standard AS3959-2009 Construction of Buildings in Bushfire-Prone Areas, mandates different construction requirements based on your property's BAL (Bushfire Attack Level).

Designed to improve the ability of new homes to withstand bushfire and ember attack, the standard affects your choice of construction materials for a number of features around your home, including gutter guards such as gutter mesh.

Ember guard compliance

Ember guards stop burning embers getting into your home through gaps greater than 3mm. They can be made from a non-combustible mesh with an aperture (hole size) of 2mm or smaller. Mandatory for all new homes built in a bushfire-prone area with a BAL of 12.5 or higher, they're used to "seal" any gaps greater than 3mm, such as gaps around your roof sheeting.

For homes in areas with a BAL of 12.5, 19 or 29, ember guards can be manufactured from corrosion-resistant steel, bronze or aluminium. For homes in areas with a BAL of 40 or higher, only corrosion-resistant steel or bronze ember guards are allowed. Corrosion-resistant steel gutter mesh with an aperture of 2mm is an ideal ember guard solution.

Gutter guard compliance

According to AS3959-2009, gutter guards are optional for anyone building a new home in an area with a BAL of 12.5, 19, 29, 40 or FZ. However, if you choose to use them, the standard states: *"if installed, gutter guards shall be non-combustible"*.¹ All Blue Mountain Co Gutter Mesh is non-combustible and complies to the Australian standards.

Most gutter guards are NOT ember guards, but Blue Mountain Co 2mm Steel² and 2mm Aluminium Mesh³ are both ember and gutter guards. They are compliant with both requirements.

¹ Standards Australia, *Australian Standard: Construction of Buildings in Bushfire-Prone Areas*, 2009.

² Compliant for use on new homes in bushfire-prone areas with a bushfire attack level (BAL) of 12.5 or higher

³ Compliant for use on new homes as an ember guard in bushfire-prone areas with bushfire attack levels (BAL) of 12.5, 19 and 29.

Our gutter mesh specialists
are available to help
(07) 3248 9600
bluemountainmesh.com.au

The reality is that not all 'bushfire compliant' gutter mesh products are actually 'ember guard compliant'.

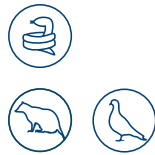
At Blue Mountain Co, we know you must protect yourself against the risk of fires igniting in any area of your property, including your gutters, roof cavities and wall spaces. This means using the correctly specified products.

Only "ember guard compliant" mesh will keep both leaves and embers out of your gutters, providing the maximum defence against ember attack.

That's why we recommend our 2mm steel gutter mesh for all homes in bushfire-prone areas.



Pests & vermin



Animals in your gutters and roof cavity can cause extensive damage, health hazards and sleepless nights. They're also costly to remove. By fixing sturdy gutter mesh over your gutters, you can prevent these animals from making your home their home.

Keep pests out of your roof

Uncovered gutters provide an easy entry point into your roof cavity. Gutter mesh keeps possums, snakes, rats, mice, birds and other pests out of your roof cavity to prevent pest-related problems including:

- Noise (pests running around and using the space as a nest or to raise their young)
- Mess and destruction (pests leaving droppings, damaging your insulation and internal structure, or even dying and decomposing in your roof)
- Removal expenses (to remove pests often requires specialists to set traps and relocate them)

Stop pests nesting in your gutters

By stopping birds, possums and other pests from nesting in your gutters during the dry season, you'll prevent blocked pipes and flooding. For homes with rainwater tanks, keeping pests out also helps to prevent contaminated rainwater.

Eliminate insect havens

Accumulated leaves in your gutters can lead to pooled water, which endangers your home and health by attracting insects, including mosquitoes. Keeping leaves out of your gutters with gutter mesh helps to prevent mosquitoes breeding in this stagnant gutter water and spreading mosquito-borne diseases.

Both steel and aluminium gutter mesh provide an effective barrier to the entry of pests and vermin. It is worthwhile to consider the type of pest and select the gutter mesh with the appropriate strength needed.



Hail & snow



When it comes to choosing gutter mesh for your home or building, hail and snow probably aren't the first thing you think about.

However, it's actually vital that you consider your hail and snow risks in order to choose an appropriate mesh for your location.

During hailstorms, accumulated hail in gutters can cause rainwater to back up and flood your home. By keeping hail out of your gutters, gutter mesh provides protection from this flooding risk.

Heavy hail falling at high speeds can puncture some gutter meshes, while the weight of accumulated hail or snow can cause some gutter meshes to tear.

As torn or otherwise damaged gutter mesh can be as bad as having no gutter mesh at all, hail and snow are key environmental factors to consider.

Hail and snow are somewhat unpredictable forces of nature, but if you live in an area that has experienced them, you should consider choosing a strong gutter mesh. That is why we recommend our steel gutter mesh range as it is best able to withstand puncturing and the weight of accumulated hail and snow.



Accumulated hail in a gutter without gutter mesh installed



2mm Steel Gutter Mesh installed

Strength & durability



The roof is a torrid place, prone to many challenging weather conditions and events.

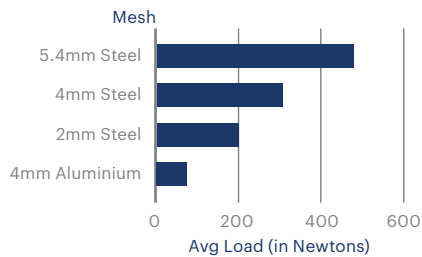
Damaged gutter mesh is as bad as having no gutter mesh at all, so it's important to consider your strength requirements in order to choose an appropriate mesh for your location.

We conducted a number of independent, laboratory-based tests on our gutter mesh to measure their strength in different ways.

Puncture resistance

Punctures from hailstones or falling debris can render your gutter mesh unfit for purpose.

We tested the puncture resistance of our gutter mesh range and our steel mesh demonstrated superior strength and durability. Simulated hail and tree branch impact testing delivered the same results and confirmed that steel mesh is best able to handle high impacts and punctures.



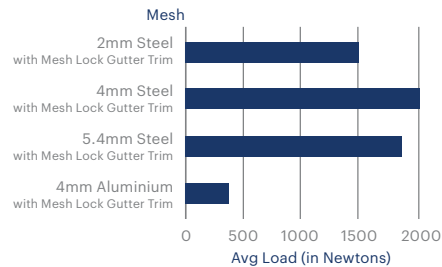
Load-bearing capacity and tear resistance

Your gutter mesh may sometimes need to bear loads such as accumulated hail, snow, tree debris and heavy animals.

In a gutter mesh installation, the connections to the gutter represent the points of greatest vulnerability.

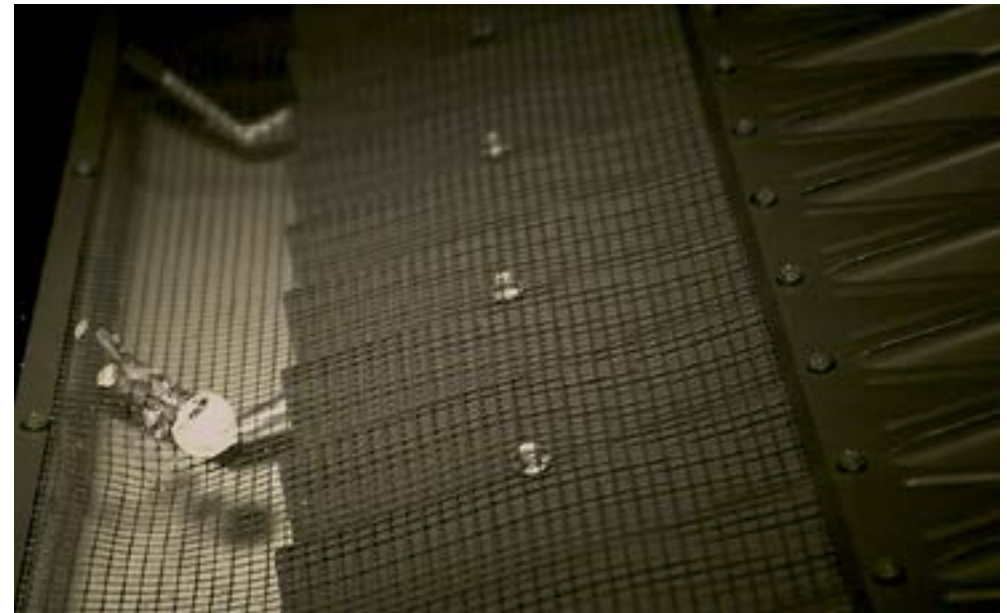
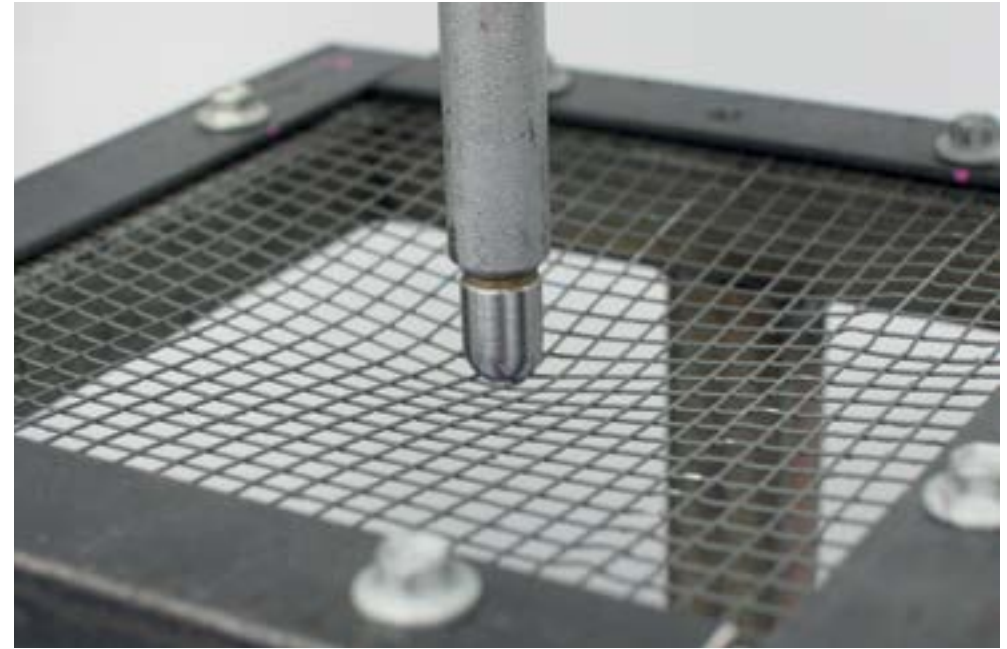
We tested our gutter mesh installed with different gutter componentry and steadily increased the weight on the mesh until it broke or tore from its fastenings.

Our steel gutter mesh demonstrated superior results across all tests. To make our gutter mesh even stronger, we then developed a world-first Mesh Lock Gutter Trim designed to increase tear-resistance of the fastenings. Testing confirmed that the Mesh Lock Gutter Trim significantly increased the strength of all gutter mesh, most notably aluminium.



If hail, snow, heavy animals or overhanging trees are a problem in your area – or you just want the strongest mesh there is – then the superior strength of steel gutter mesh may be the deciding factor for you.

We recommend always installing Mesh Lock Gutter Trim with your gutter mesh to ensure you maximise strength and durability.



5.4mm Steel Gutter Mesh undergoing hail impact testing

Firing the hail at 125 kPa or 23 metres per second (approximate speed of hail) did not puncture the mesh, and caused the hail to shatter.

Note: A Newton is a measure of force / gravity.
1 Newton = 0.102kg

Rust & corrosion



“Rust” is the well-known name for a common form of corrosion. It is the result of the deterioration of materials (especially metals) due to a chemical interaction with their environment.

A significant proportion of roof and gutter materials consist of metal, so corrosion is an important consideration when selecting your gutter mesh. You can drastically reduce the risk of corrosion by:

- Not mixing different kinds of metals
- Minimising the total time metal surfaces are wet
- Using fit-for-purpose, specially coated steel

Avoid mixing metals

When two different or “dissimilar” metals are interconnected or joined, rust in the form of galvanic corrosion will occur. Galvanic corrosion can have serious consequences as it can accelerate the process of corrosion for one of the metals involved.

The best way to prevent rust via galvanic corrosion is to avoid mixing metals and always use similar metals together. Think zinc-coated steel gutter mesh and zinc-coated steel screws with your steel roof and you’ve got the right idea.

Minimise wetness

The proportion of total time that surfaces are wet is known as “time of wetness” (TOW).

Atmospheric corrosion occurs when metal surfaces are subjected to frequent wetting by dew, fog or rain, especially if the moisture has an acidic content. Gutters clogged with leaves and debris are bad news for corrosion prevention. Fortunately, clogged gutters can be easily avoided by installing an over-the-gutter mesh with the appropriate aperture (hole size) for your home and location.

Use fit-for-purpose, specially coated steel

Galvanised steel, Colorbond® steel, zinc-coated steel and stainless steel are all examples of specially coated steels that are rust-resistant. However, it is important to choose a rust-resistant steel that is fit for purpose. Avoid mixing dissimilar metals by selecting the rust-resistant steel that is most compatible with your roof and gutter materials.

What about stainless steel?

In and of itself, stainless steel is a rust-resistant material. However, when joined to a roof made from a different material, such as Colorbond® steel, it can cause your roof to rust prematurely. If you are considering stainless steel, it is important to ensure that the roof and gutter materials are compatible and not dissimilar.



02

Match your ideal mesh

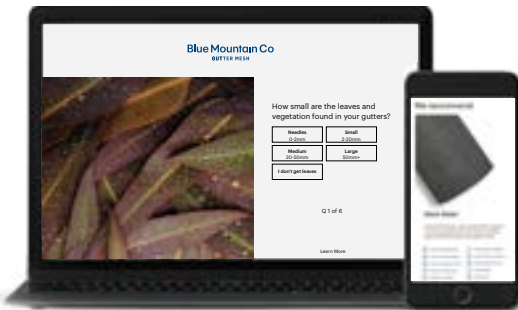
Risks and needs vary from property to property and place to place, so we've developed an extensive range of gutter mesh products to provide a mesh solution that's the ideal match for your property.

Our Range

Blue Mountain Co offers a comprehensive range of aluminium and steel gutter mesh to ensure that you can find the right mesh for your home.

Mesh Matcher™

Every environment and roof is different. Use our simple online tool Mesh Matcher™ to find the right gutter mesh for you. Visit meshmatcher.com.au.



Our range

Steel

Superior in strength and durability, Steel is our most resilient gutter mesh and is available in three different apertures to keep out a range of leaf types. It can be installed on almost any roof, and our 2mm steel gutter mesh is also ember guard compliant for all BALs. Custom options are also available.



2mm
Steel



4mm
Steel



5.4mm
Steel



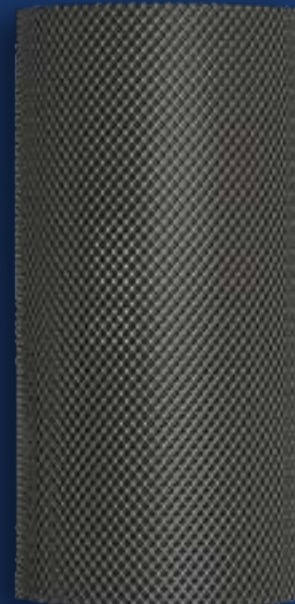
2mm
Aluminium
NEW

Aluminium

Available in a wide range of colours and to suit popular roof types such as corrugated, tile and Trimdek®, Aluminium is a great solution where managing leaves and debris is the main issue. The new 2mm aperture is ember guard compliant (up to BAL 29), while the new 4mm Ultra is thicker and stronger than the classic 4mm Aluminium.

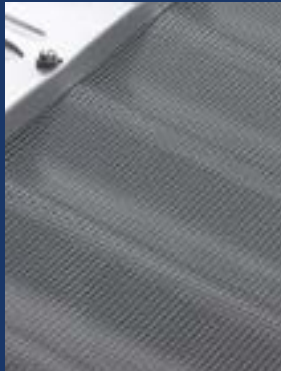


4mm
Aluminium



4mm
Aluminium Ultra
NEW

Which gutter mesh is right for you?



2mm Steel

- Keeps out most needles
- Keeps out small leaves
- Keeps out medium leaves
- Keeps out large leaves
- Keeps out pests & vermin
- Bushfire compliant
- Ember guard compliant¹
(BAL 12.5, 19, 29, 40 & FZ)
- Withstands hail & snow
- High strength
- 30 Colours

4mm Steel

- Keeps out medium leaves
- Keeps out large leaves
- Keeps out pests & vermin
- Bushfire compliant
- Withstands hail & snow
- High strength
- 30 Colours

5.4mm Steel

- Keeps out large leaves
- Keeps out pests & vermin
- Bushfire compliant
- Withstands hail & snow
- High strength
- 30 Colours

2mm Aluminium

- Keeps out most needles
- Keeps out small leaves
- Keeps out medium leaves
- Keeps out large leaves
- Keeps out pests & vermin
- Bushfire compliant
- Ember guard compliant²
(BAL 12.5, 19 & 29)
- Medium strength
- 27 Colours

4mm Aluminium Ultra

- Keeps out medium leaves
- Keeps out large leaves
- Keeps out pests & vermin
- Bushfire compliant
- Medium strength
- 27 Colours

4mm Aluminium

- Keeps out medium leaves
- Keeps out large leaves
- Keeps out pests & vermin
- Bushfire compliant
- Medium strength
- 27 Colours

¹ Compliant for use on new homes in bushfire-prone areas with a bushfire attack level (BAL) of 12.5 or higher, as per AS3959-2009 Australian Standard: Construction of buildings in bushfire-prone areas.

² Compliant for use on new homes as an ember guard in bushfire-prone areas with bushfire attack levels (BAL) of 12.5, 19 and 29, as per AS3959-2009 Australian Standard: Construction of buildings in bushfire-prone areas.

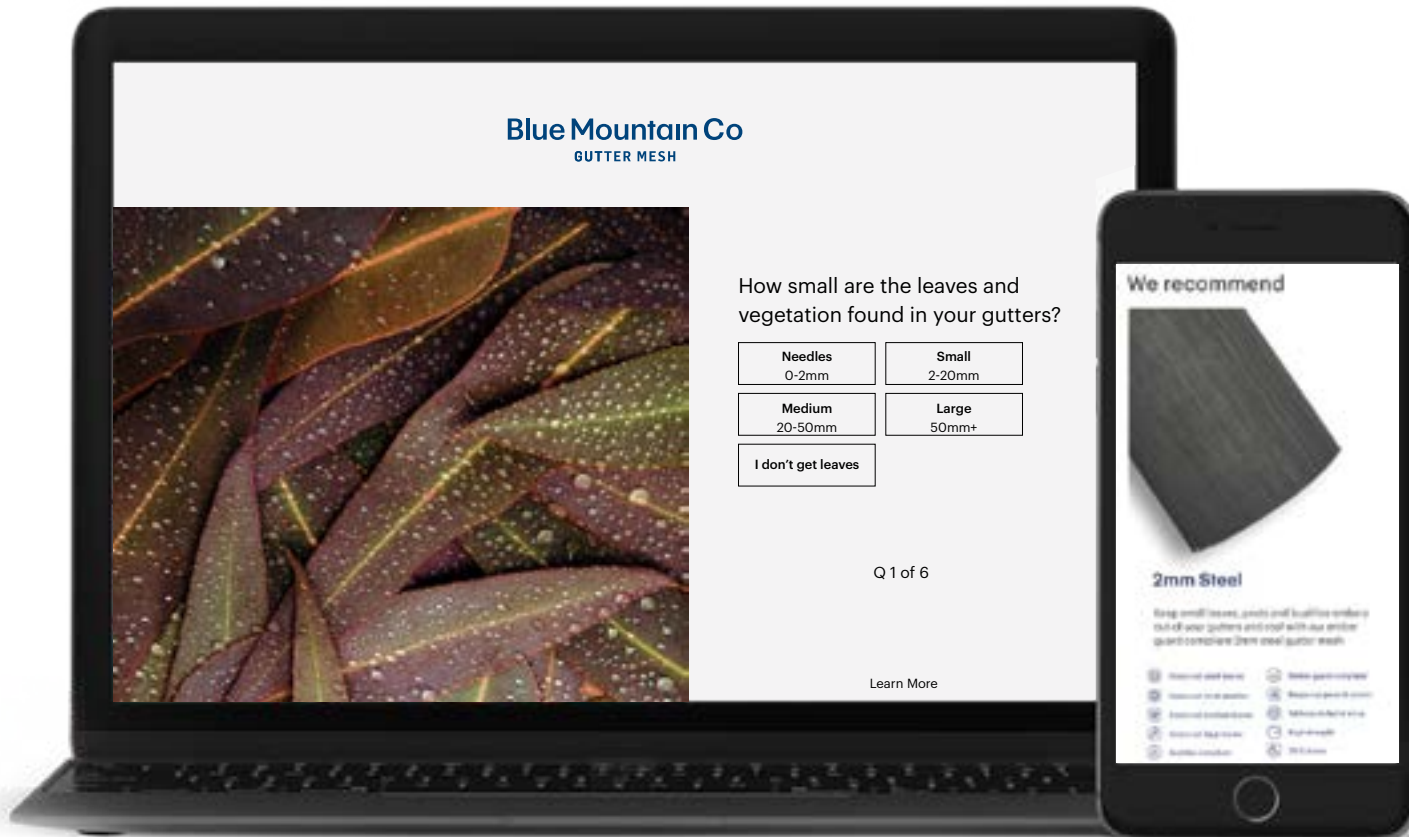
2. Match your ideal mesh

Mesh Matcher™

Our online tool makes it easy to select the right mesh for your property.

Just answer six simple questions about your location, preferences and needs to find the right mesh for you.

Visit meshmatcher.com.au.



03

The perfect installation

With all-inclusive kits and specially tailored componentry, our gutter mesh is easy to install. Not only does it protect your property – it also looks great doing it.

Kits and componentry

All our gutter mesh comes in kit form with colour-matched componentry and screws for an easier – and better-looking – installation.

Solutions for almost any roof

Our gutter mesh can be easily fitted to almost any roof type and feature, delivering clean lines and an integrated finish.

Custom solutions and expert advice

If you need a custom mesh solution for your architecturally-designed home, unusual roof, distinctive colour scheme or other unique needs, we will work with you to develop one.

Gutter Mesh Design Service™

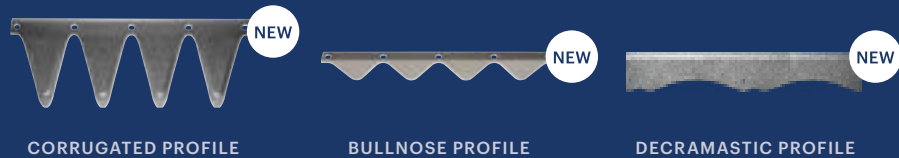
Making the decision to use gutter mesh is easy – designing the right gutter mesh solution for your home can be hard. Assisted by our team of experts, the free Gutter Mesh Design Service™ helps you select your mesh, measure your roof or plans, and develop the best installation design. It's simple, hassle-free and available for existing and planned buildings.

Get expert assistance and advice with our free Gutter Mesh Design Service™ visit www.bluemountainmesh.com.au or call us on (07) 3248 9600.



Kits & componentry

All our gutter mesh comes in kit form with colour-matched componentry and screws for an easier – and better-looking – installation. The unique suite of componentry developed by Blue Mountain Co is the reason our gutter mesh can be fitted to an array of roof types. It's also the reason our steel and aluminium mesh can blend in so easily with your property's architecture.



The beauty of steel mesh profiles

Our steel mesh profiles anchor our steel gutter mesh onto your roof. Each finger fits into the contours of your corrugated roof, creating a smooth pathway for leaves to slip off and ensuring a handsome aesthetic for your property.

Mesh Lock Gutter Trim

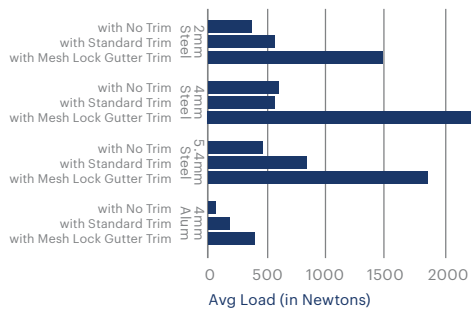


Mesh Lock Gutter Trim

Increase your gutter mesh strength by choosing the Mesh Lock Gutter Trim.

The Mesh Lock Gutter Trim's patented design increases the load-bearing capacity and tear resistance of your gutter mesh. This will reduce the likelihood of your mesh collapsing when heavy hail, snow, animals or debris land on it.

Lab testing demonstrated that the Mesh Lock Gutter Trim increased the load-bearing capacity of all our gutter mesh by over 200%.



How it works

- Mesh Lock Gutter Trim has a series of 'locking' teeth, on the underside of the trim, which helps to distribute the load on the mesh.
- The teeth are angled backwards so that if there is any pulling force of the mesh in the gutter, they lock in.
- The teeth are positioned at regular intervals, allowing increased points of contact across the gutter. Normally in 1 metre of standard gutter trim, there will be 4 points of contact. Our unique Mesh Lock pattern increases the contact points by up to 20 times that of a standard gutter trim.



We recommend always installing Mesh Lock Gutter Trim when using 4mm Aluminium Mesh as it is the most susceptible to tearing from the gutter fastenings and, therefore, benefits the most from an increase in strength.

Note: A Newton is a measure of force / gravity.
1 Newton = 0.102kg



Corrugated Valley Multi-Pitch Fin

NEW

Individual and highly adjustable, the Multi-Pitch Fin is an ideal solution for steel mesh installations on corrugated valleys.

Determining the pitch of a valley can be tricky but with the Multi-Pitch Fin's patented design, there is no requirement to determine this as it will suit any pitch.

These flexible gutter mesh components allow you to install an over-gutter steel mesh solution on any corrugated valley with ease, so you can enjoy minimal maintenance and an elegant finish.



Domed Steel Valley Mesh

The domed valley mesh is a universal valley protection solution designed to quickly and easily fit to any roof.

Product benefits

- Keeps out leaves, debris and pests from entering your valley gutters and under your roof sheets.
- Available in a range of widths to suit different valley gutter widths (spacing between the roof sheets).
- When used in conjunction with our gutter mesh, it provides a total protection system for your gutter.
- Easy to install in any valley (tile or steel roof).
- Made from durable galvanised steel mesh which is then powdercoated. This provides a corrosion resistant coating that is available in 30 colours to match your roof.
- Available in 915mm lengths which can be easily trimmed to suit your valley length perfectly.

How it works

The pinch and drop installation method used on the steel domed valley mesh ensures a secure fit beneath the roof sheets on both sides of the valley. The strength of steel provides long lasting, durable protection for your roof valleys.

Overlapping and joining the domed valley sheets to each other, the ridge cap, and your gutter mesh will safeguard your roof from pollutants and unwelcome intruders.



Solutions for almost any roof

With clean lines and a variety of colour options, our range is designed to be aesthetically pleasing. The only thing you (or anyone else) will really notice from the street is just how clean your gutters are compared to your neighbours'!

Our gutter mesh can be easily fitted to almost any roof type and feature. If we don't already have a solution for you, we can create one.

Common roof types can include:

- Corrugated
- Flat tile
- High profile tile (e.g. Tuscan)
- Trimdek® / Monoclad® / Superdek®
- Klip-Lok® / Metlok®
- Spandek®
- Longspan®



Comprehensive colour range

Blue Mountain Co Gutter Mesh and componentry come in an extensive range of COLORBOND® and tile colours to suit a wide range of properties.



†Sandbank®, Loft® and Galvanised are only available for Steel Gutter Mesh

Note: Zinc and Galvanised are supplied with Shale Grey™ mesh

*Colour-matched aluminium mesh

- Zinc (Zinc componentry with Shale Grey™ aluminium mesh)
- Bushland® (Bushland® componentry with Windspray® aluminium mesh)
- Wilderness® (Wilderness® componentry with Pale Eucalypt® aluminium mesh)
- Evening Haze® (Evening Haze® componentry with Paperbark® aluminium mesh)

**Only available to suit gutter and valleys in 10m and 30m rolls.

Trimdek®, Spandek®, Klip-Lok®, COLORBOND® and all colour names used are registered trade marks and ™ colour names are trade marks of BlueScope Steel Limited. © 2014 BlueScope Steel Limited ABN 16 000 011 058. All rights reserved. Monoclad® and Stramit Longspan® are registered trade marks of Stramit Corporation Pty Limited. Metlok® is a registered trade mark of Metroll Pty Limited. Superdek® is a registered trade mark of Stratco (Australia) Pty Limited.



Custom solutions & expert advice

Do you have a tricky roof or unusual gutters? Need help measuring your roof?

Blue Mountain Co is able to design and manufacture customised gutter mesh solutions for almost any property.

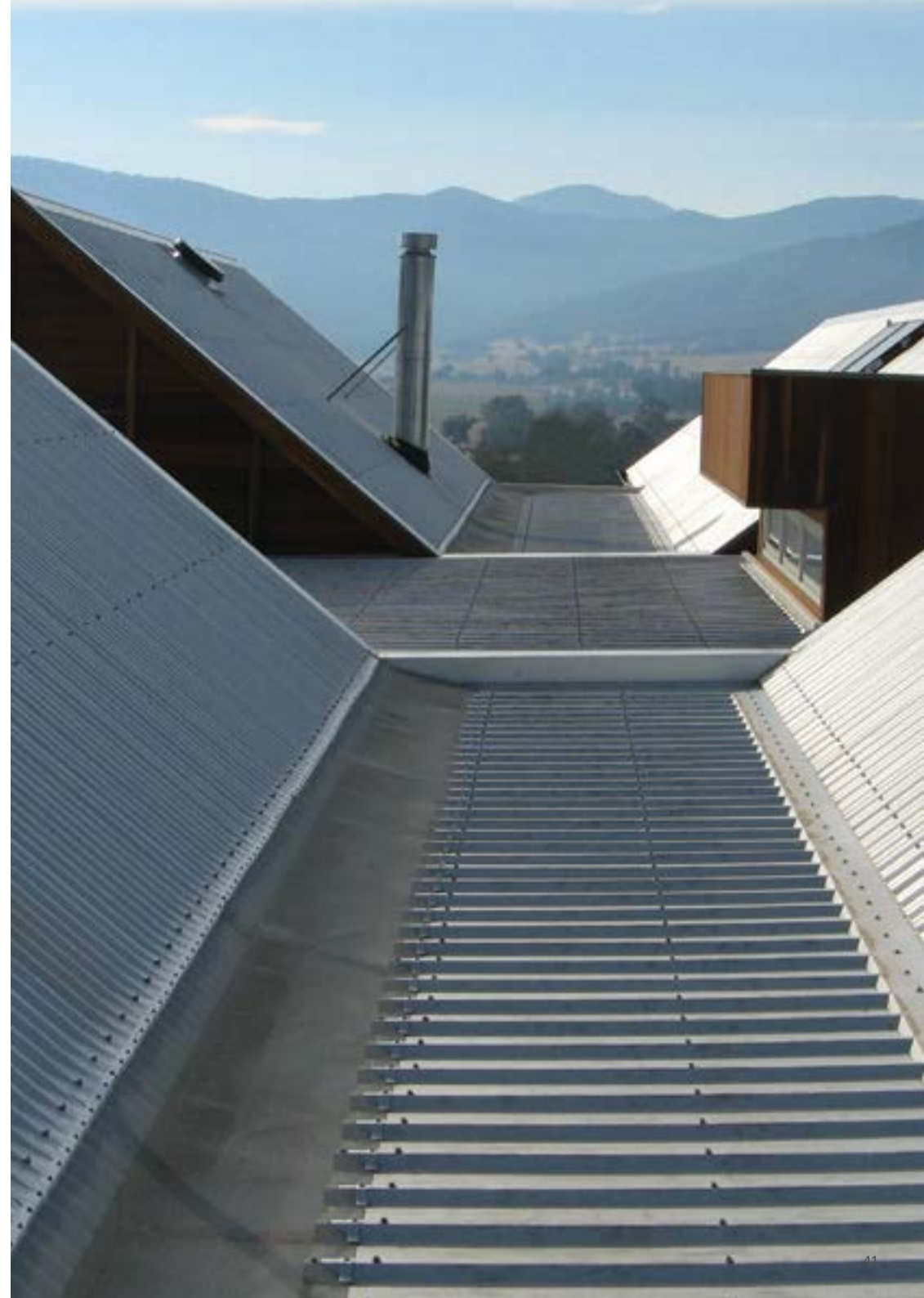
Custom design

Sometimes, gutter mesh installations are complicated by your roof or gutter design. To overcome this challenge, we can develop tailored gutter mesh solutions and installation methods for your building. This may be necessary if you have a non-standard roof or gutters and you need to facilitate installation on awkward materials or avoid corrosion from mixed metals.

Custom sizes

Where necessary, we can manufacture different widths of mesh to suit your property's practical and design needs. For example, you may need wider mesh for wide box gutters or low-profile roofs. Because this is an area not every homeowner is familiar with, we're happy to advise you on the optimal width for your roof and gutter design.

Get expert assistance and advice with our free Gutter Mesh Design Service™, visit www.bluemountainmesh.com.au or call us on (07) 3248 9600.



Gutter Mesh Design Service™

Making the decision to use gutter mesh is easy – designing the right gutter mesh solution for your home can be hard. Assisted by our team of experts, the free Gutter Mesh Design Service™ helps you select your mesh, measure your roof or plans, and develop the best installation design. It's simple, hassle-free and available for existing and planned buildings.

Why you should do it

We carefully review your building, plans and environment and provide a mesh and installation recommendation based on these specific requirements. Some roofs and gutters require custom designs or custom sizes. Our experts ensure that you have the right gutter mesh design and mesh type to achieve maximum protection for your building. Plus, there's no need to wait for someone to come out and measure your roof – we take care of that for you with our aerial imagery software.

Simply visit www.bluemountainmesh.com.au/gutter-mesh-design-service to complete the request form and we'll email you a tailored report with the solution you require.

Whats involved

The Gutter Mesh Design Service™ includes a range of services that are tailored to your needs.

For homeowners, this may include:

- Needs & environmental assessment
- Gutter Mesh recommendation
- Roof measure
- Custom design or size requirements
- Installation design

For building professionals this may include:

- Roof measure
- Gutter Mesh recommendation
- Specification assistance
- Building plan review and measure
- Custom design or size requirements
- Installation design



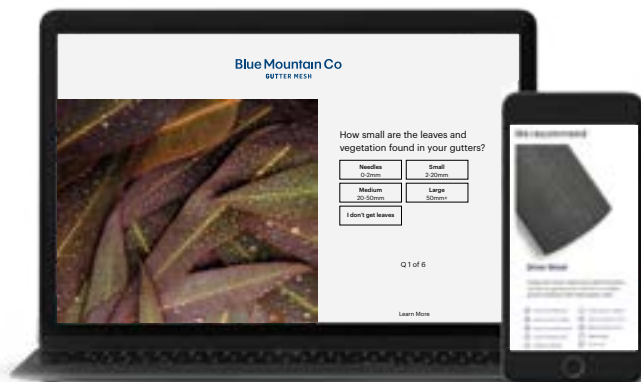
Helping you select the right gutter mesh

All our tools and resources are designed to help you make the right gutter mesh decision.

Visit bluemountainmesh.com.au to explore our range of tools which make it easy to assess your needs, select the right gutter mesh and configure your kit.

Mesh Matcher™

Our online tool makes it easy to select the right mesh for your property. Just answer six simple questions about your location, preferences and needs to find the right mesh for you. Visit meshmatcher.com.au.



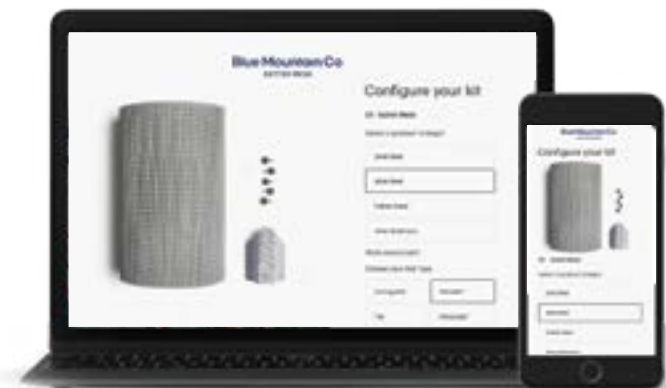
Find a Code Tool


The Blue Mountain Co Gutter Mesh range covers a myriad of roof types, mesh apertures and componentry. However, identifying your chosen mesh code is still easy.



Get a Quote Tool

Save time and effort and make ordering easy with the Blue Mountain Co Gutter Mesh Quote Tool. Input the steel or aluminium mesh you require, specify your colours and roof type and take away a one-page PDF listing everything you need.





By selecting the gutter mesh best suited to your property and location, you'll enjoy greater peace of mind and years of hassle-free gutters. Our gutter mesh specialists are available to help you design and find the right solution for your property. Visit bluemountainmesh.com.au or give us a call on (07) 3248 9600.

DISCLAIMER

You acknowledge and agree that the information, data, advice, opinion, plan or other thing (Material) provided to you by Rain Harvesting Pty Ltd (ABN 11 113 300 093) (we, us, our) is provided "as is" without any representation, warranty, indemnity or guarantee as to the performance, accuracy, timeliness, completeness, merchantability or fitness of the Material for any particular purpose or application. The Material may contain errors, mistakes, inaccuracies and may not be complete. We expressly exclude any liability for such performance, accuracy, timeliness, completeness, merchantability or fitness of the Material for any particular purpose or application, to the maximum extent permissible by law. Unless we expressly specify otherwise, we disclaim all responsibility and liability for any third party provided advice or provision of services, or failure to advise or provide services. The disclaimers above are subject to the rights, warranties, guarantees and remedies relating to the provision of services that you have under, and that cannot be excluded, restricted or modified under, the Australian Consumer Law. For more information, please see our Services Purchase Terms at www.bluemountainco.com.au.

Blue Mountain Co

GUTTER MESH

For more information or to find out
how we can help give us a call on:

(07) 3248 9600

Or visit our website:
bluemountainmesh.com.au